



# BEAUFORT GREEN

# Hurlingham Road, SW6

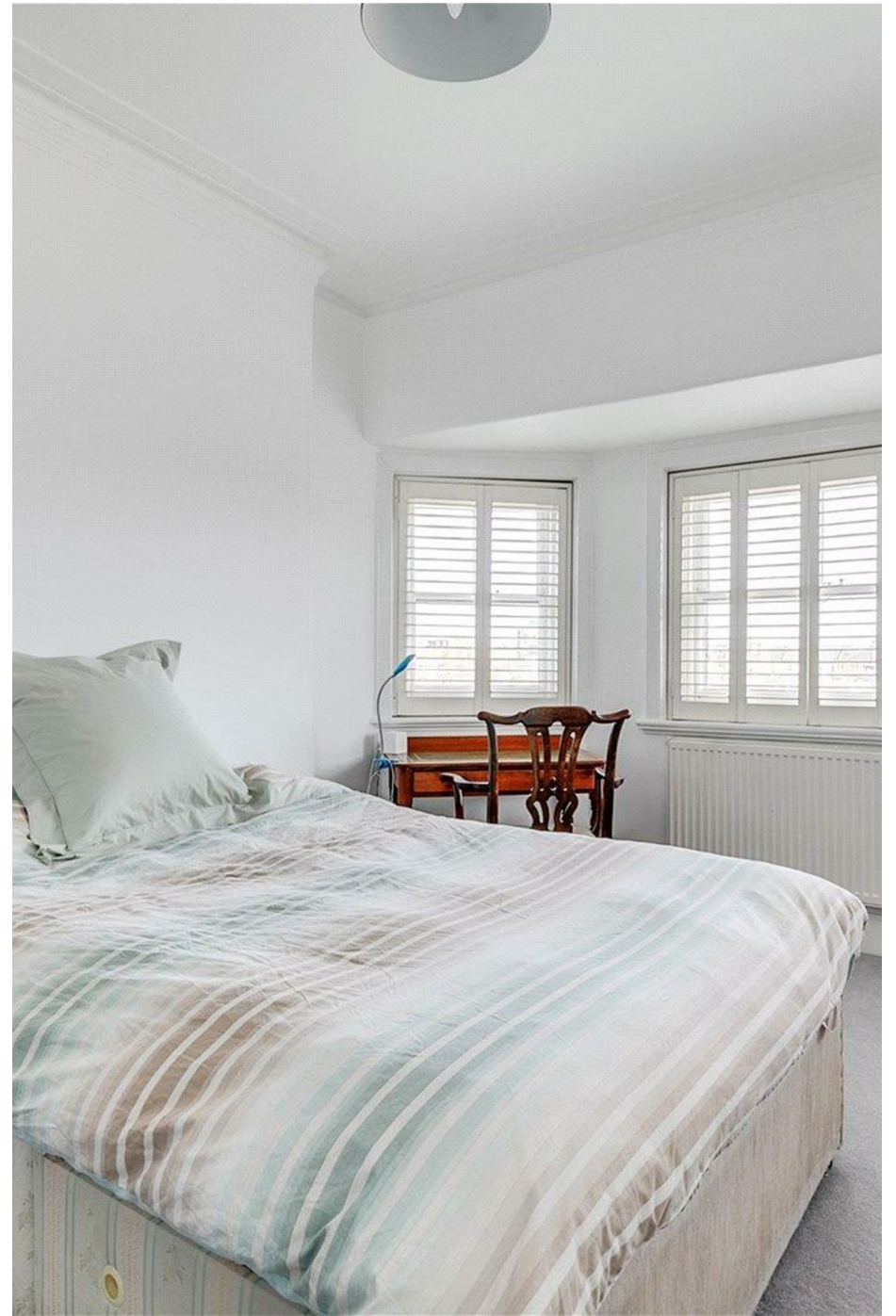
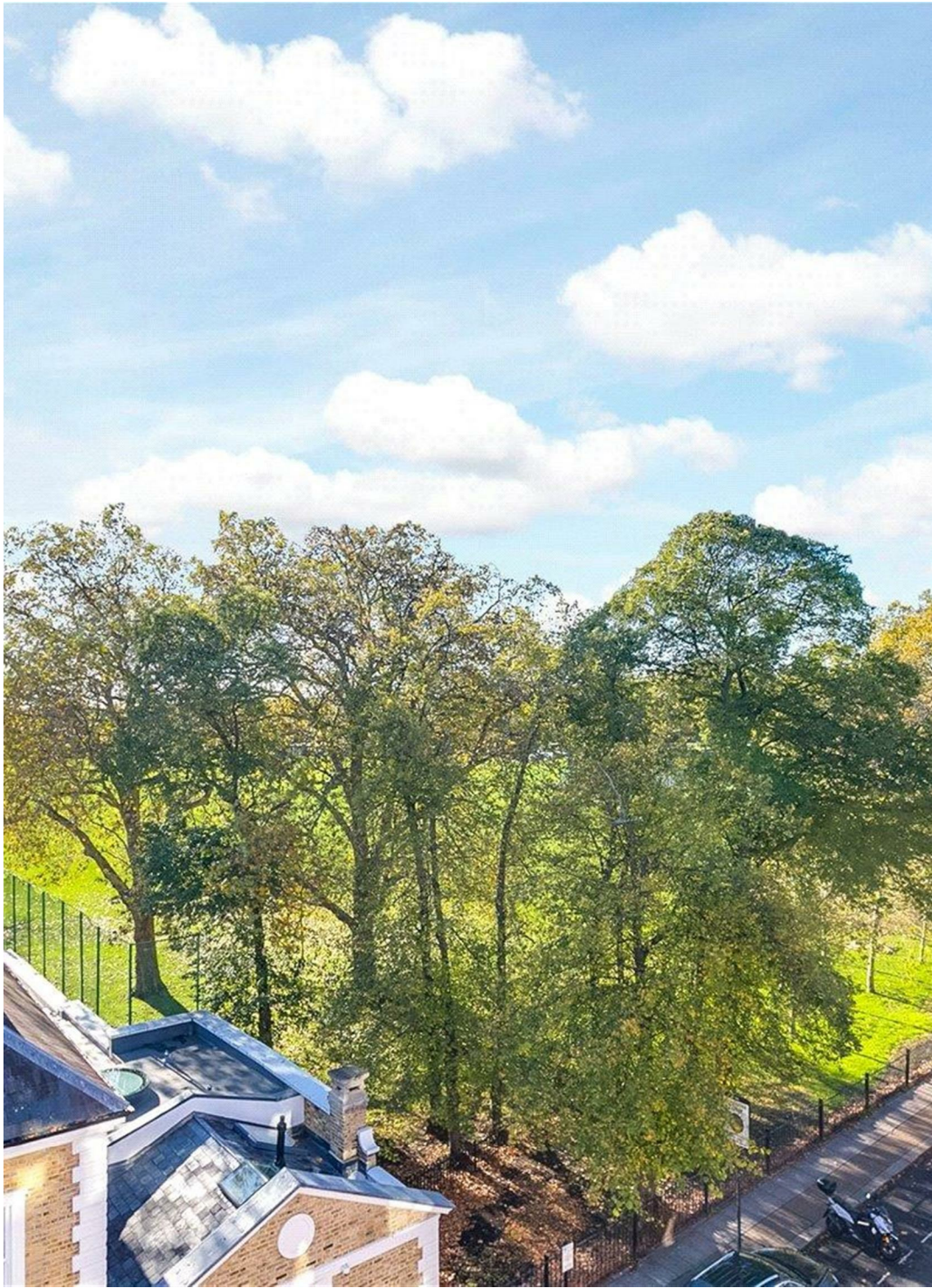
£825,000



A well-appointed two double bedroom lateral apartment in the heart of Parsons Green, with direct views over Hurlingham Park.

The property offers a spacious reception room, a separate kitchen and two generously sized double bedrooms, all presented with a traditional finish. The block is owner-managed, offering residents a well-run and carefully maintained setting in one of Parsons Green's most desirable positions.





# BEAUFORT GREEN



## Hurlingham Court Mansions, Hurlingham Road, SW6

Approximate gross internal area

71.25 sq m / 767 sq ft

Key :  
CH - Ceiling Height



Third Floor

Not to scale, for guidance only and must not be relied upon as a statement of fact.  
All measurements and areas are approximate only

### At a Glance.

- Lateral Apartment
- Heart of Parsons Green
- Share of Freehold
- Views over Hurlingham Park
- Two Large Double Bedrooms
- Mansion Block

# BEAUFORT GREEN

02074594100

[charlie@beaufortgreen.co.uk](mailto:charlie@beaufortgreen.co.uk)

---

263 New Kings Road  
London  
SW16 1DB